



ELITE VENTURES & SPACES PVT LTD

Let Your Dreams Be Our Project



*Sai Sukriti*

Building with  
vision, quality and pride



# ELITE VENTURES & SPACES PVT LTD

## About Us

Elite Ventures was established by our C.E.O who is an U.K return architect by professional and he is a gold medalist with a basic moto of building dream homes with an architectural touch. Our C.E.O is a down to earth person where each and every flats were crafted by a personal touch. We have gained complete trust of our clients over 20 years. On time delivery of our projects , strong financial positions gives transparency, confidence and has gained clients trust over years.



Let's renovate  
**your living space.**

Your satisfaction is our goal. Your vision is our business. Do you believe in magic? Lets build future homes with us. Where quality meets innovation. At the intersection of quality and innovation reposes ELITE.



# PRIME FLATS

## FLAT SIZES

2 BHK

(950 & 1050)

sq.ft

✓ CCTV

✓ VDF

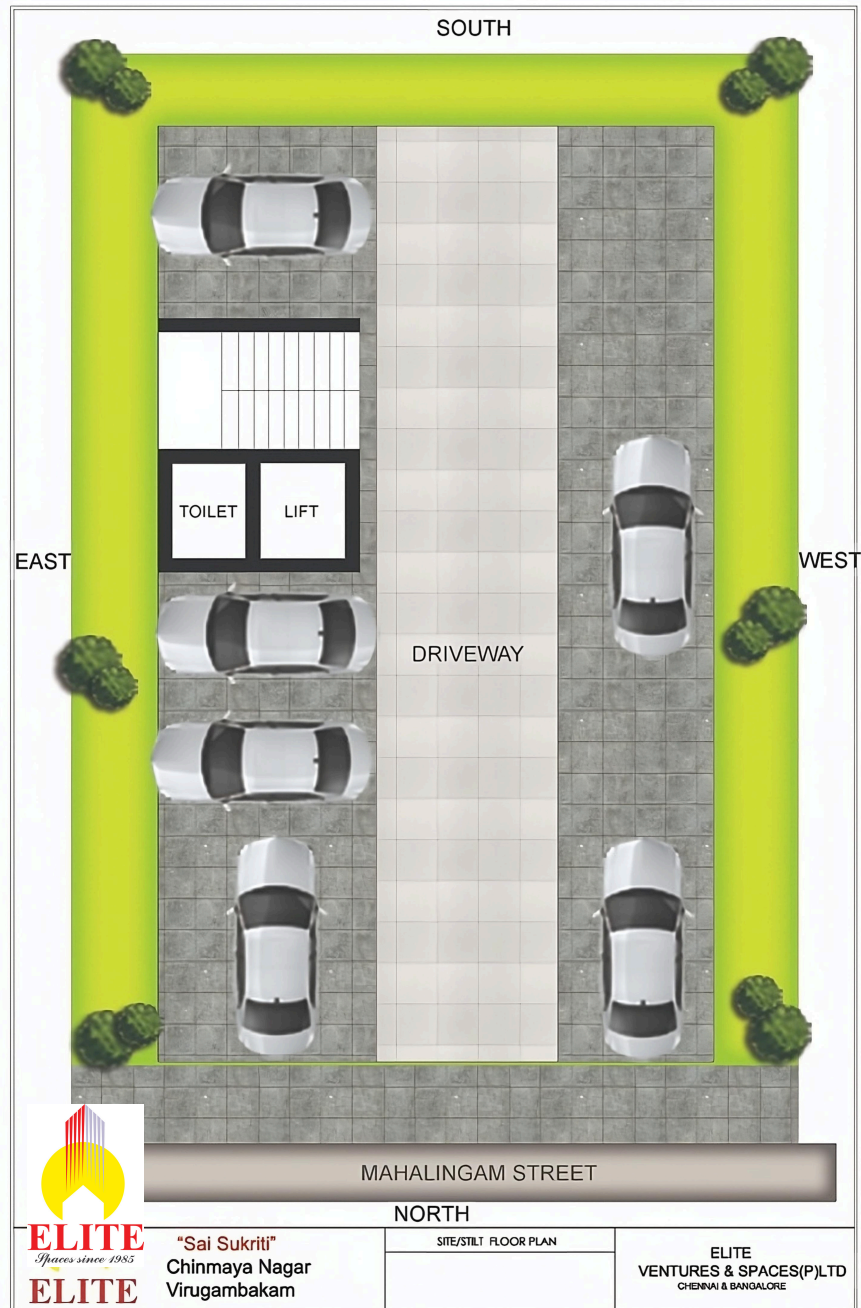
✓ CCP

✓ LIFT



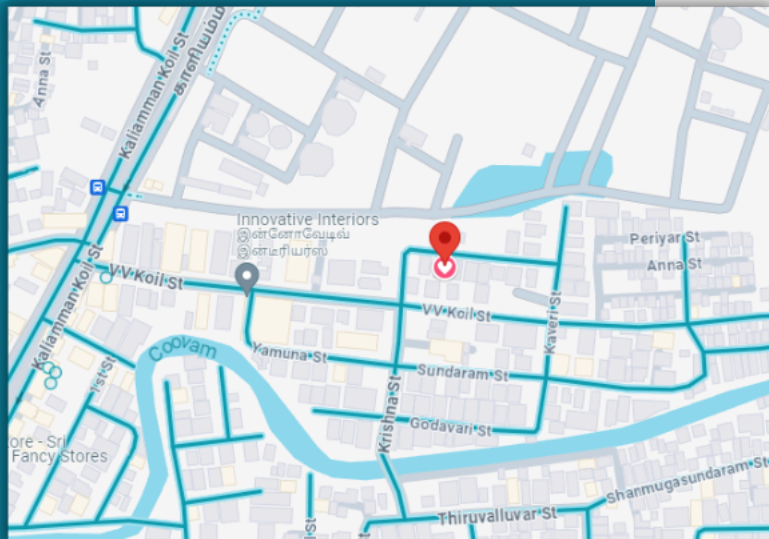


# Floor Plan



# Ensuring your vision becomes reality

Chinmaya Nagar is the place to connect and celebrate exclusivity. With excellent connections and abundant things to do, it's clear that the search for your dream ends here now. Become a resident of Sukriti, and you will find yourself in the heart of an ever-loving city quarter.



Floors	Floors	Sale Area
First Floor	F1	950 sq.ft
	F2	1050 sq.ft
Second Floor	F3	950 sq.ft
	F4	1050 sq.ft
Third Floor	F5	950 sq.ft
	F6	1050 sq.ft

## FOR LIFE'S CONVENIENCES

With vastu compliant - One car parking for each flat on the stilt floor

- ✔ Lift with automatic door close with ARD
- ✔ One bore well will be provided irrespective of water quality
- ✔ RCC UG Sump and OHT
- ✔ CCTV in the common areas
- ✔ Security locks with video door phone for each flat



# SPECIFICATIONS



## FOR THE FINE LIVING

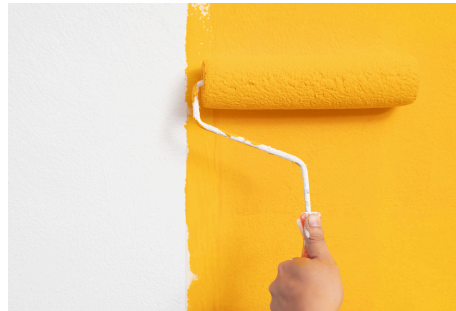
- ✓ Reinforced cement concrete framed structure
- ✓ AAC blocks / Cement blocks
- ✓ Kitchen - open cupboard and RCC loft (as per drawing)

## ELECTRICAL

- ✓ ISI Approved equivalent cables and wires
- ✓ Anchor roma switches & sockets
- ✓ A/C provision for all Bedroom & living

## JOINERIES

- ✓ Malaysian teak main door, solid panelled inside doors with Godrej mortice lock, WPC toilet doors.
- ✓ UPVC frame and slide openable shutter with thick plain glass including M.S.Grill



## CP AND SANITARY WARES

- ✓ jaguar / Parryware / Bath sense equivalent
- ✓ SS single bowl kitchen sink

## PAINTING

- ✓ Asian / equivalent painting with premium emulsion paints with putty
- ✓ Exterior painting weather shield paints with a texture finish

## FLOORING

- ✓ Vitrified tiles (2'0" x 4'0")
- ✓ Anti - skid Ceramic tiles (1'0" x 1'0")
- ✓ Black granite above RCC slab





HBR - Bengaluru



HBR - Bengaluru



Kannur - Bengaluru

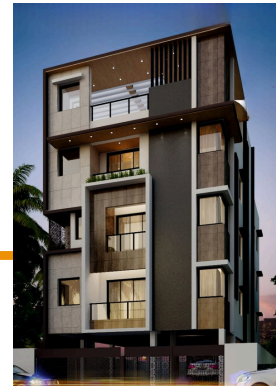


Medavakkam - chennai



Mogappair - chennai

## OUR RECENT LANDMARKS

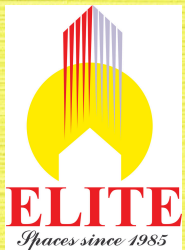


Virugambakkam - Chennai



Pallavaram - chennai

### DEVELOPER:



CHENNAI & BANGLORE

Member



### ARCHITECTS:

M/S URBANO ARCHITECTS

Chennai & Bengaluru

Ct: 8754539162

### STRUCTURAL:

M/S AURA CONSULTANTS

Chennai

### LEGAL:

SURIYA ASSOCIATES

Chennai

### GEOTECHNICAL:

BOOSHAN ASSOCIATES

Chennai

### PROJECT LOCATION:

30-6 MAHALINGAM STREET, CHINMAYA  
NAGAR, CHINMAYA NAGAR STAGE 1,  
SRI IYYAPPA NAGAR, CHENNAI - 600093.

**M/S ELITE VENTURES & SPACES(P)LTD**

57/1 SAI NAGAR 6TH STREET,VIRUGAMBAKKAM CH - 92

### FOR BOOKINGS:

**9043580731 , 9345617712**

### Disclaimer:

This brochure is purely a conceptual presentation does not carry any legal offerings. Builder Reserves rights to change, alter, modify the plans & specification